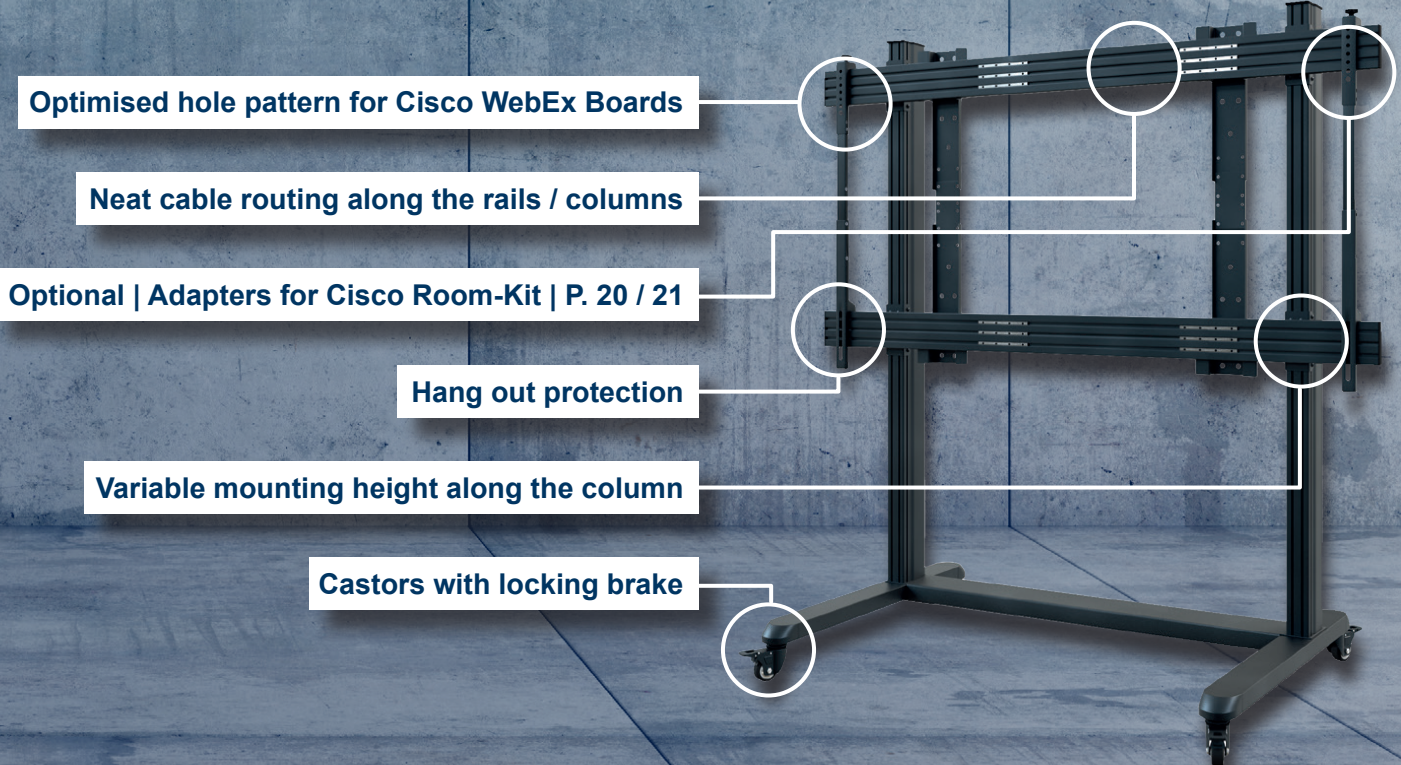
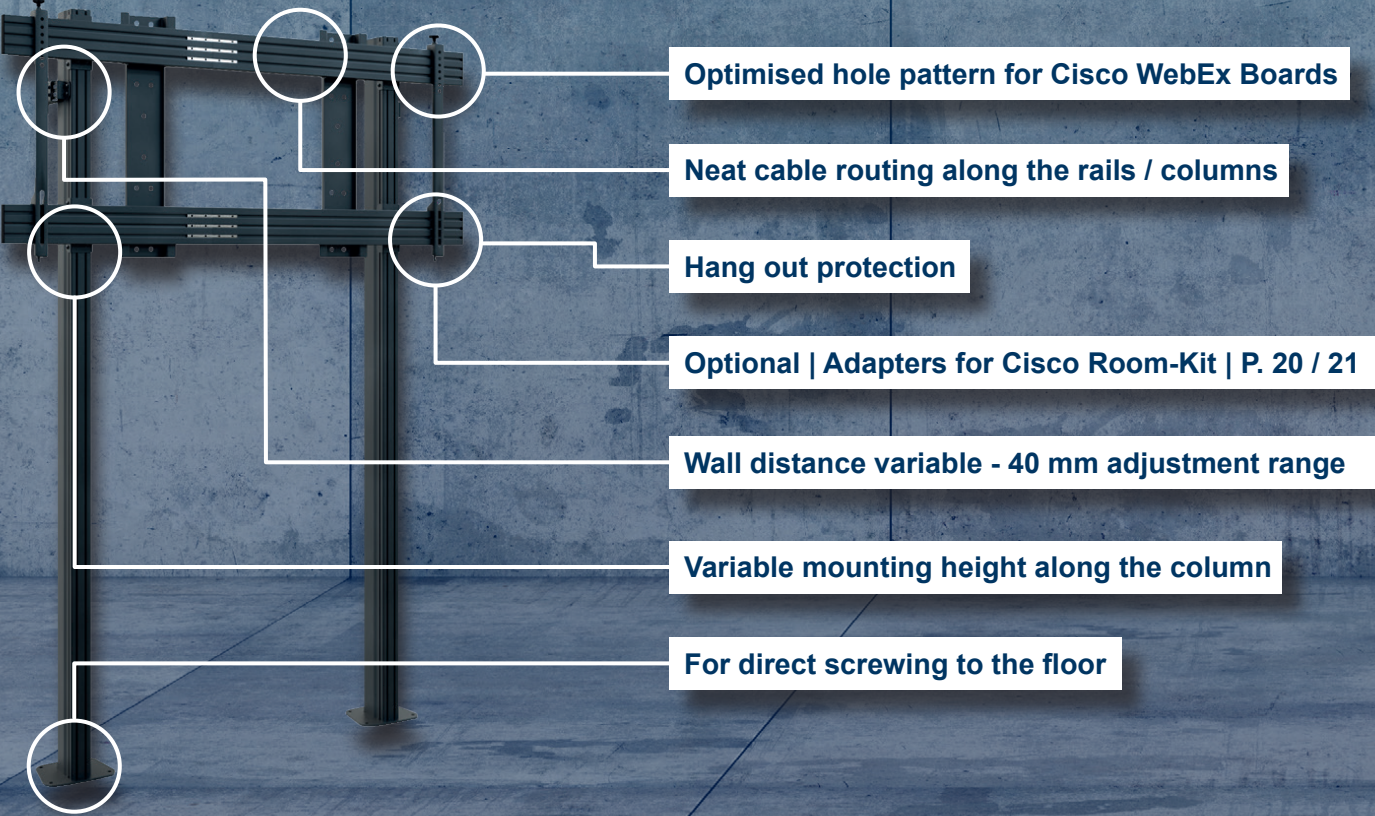
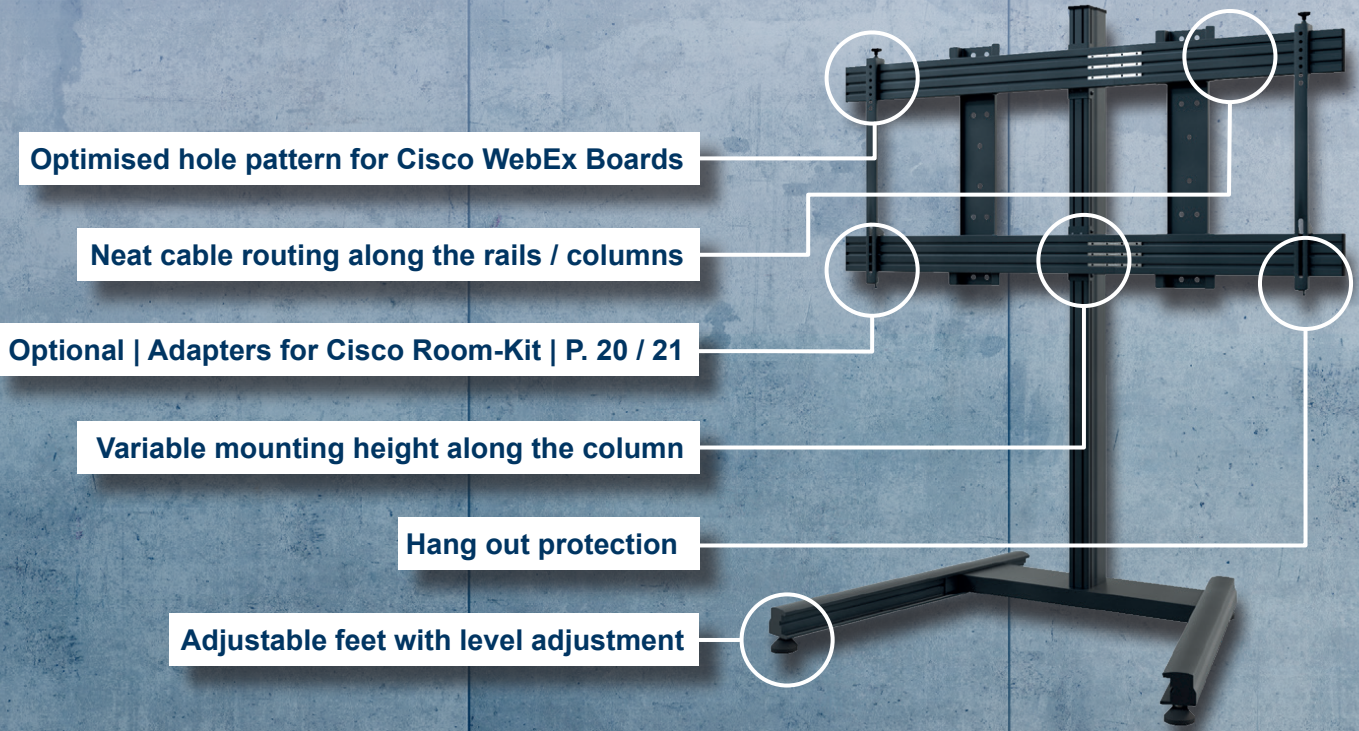
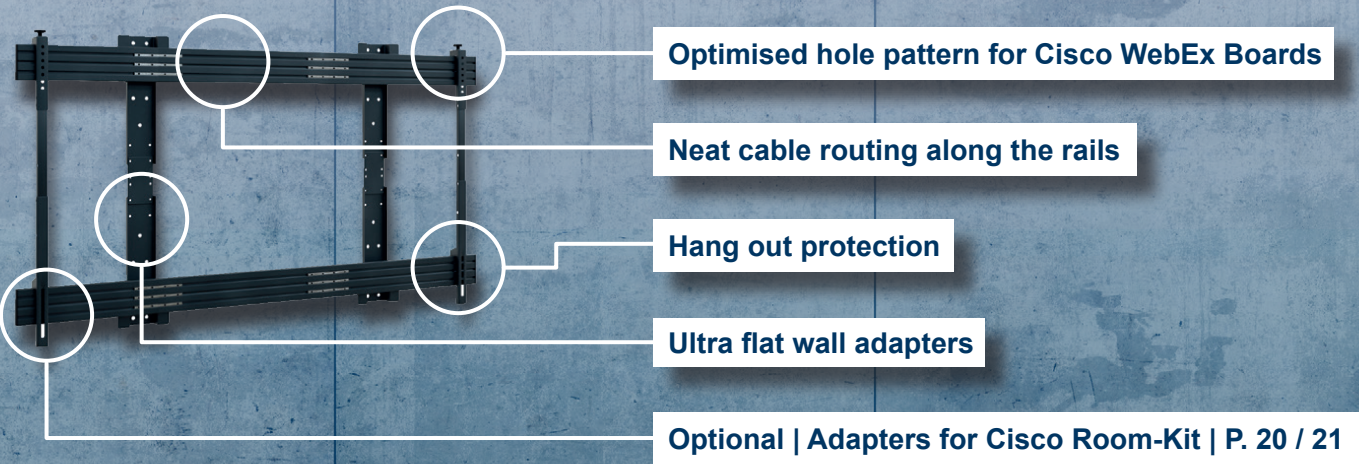


# PROFESSIONAL MOUNTING SYSTEMS

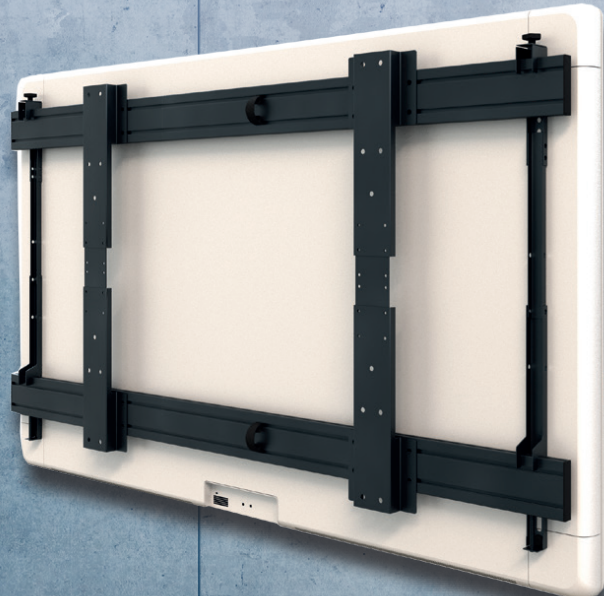
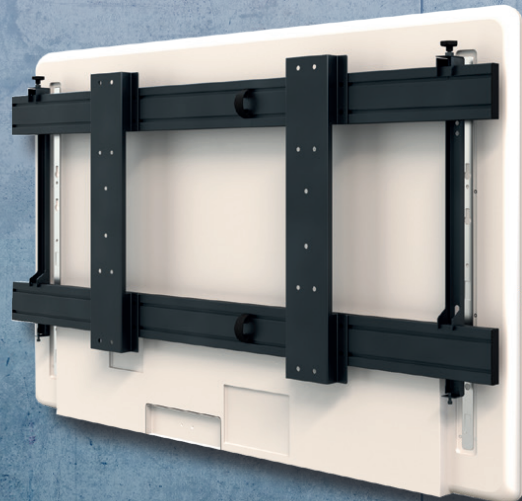
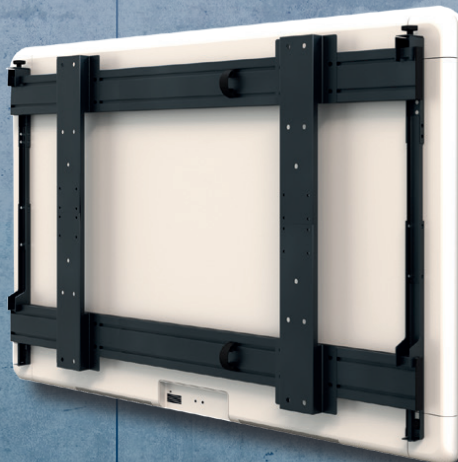
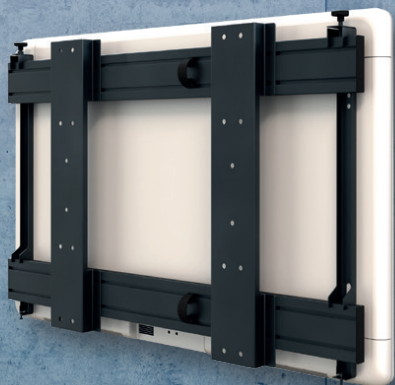
for CISCO WebEx Boards











WH Cisco WebEx Board 55" | Board Pro 55"

- Wall mounting system
- Display specific for collaboration room systems Cisco WebEx Board 55" and Cisco WebEx Board Pro 55"
- Hole pattern display specific optimised
- Dimensions (without Cisco WebEx Board):  
H 750 x W 1250 x D 74 mm (55")  
H 750 x W 1250 x D 89 mm (Pro 55")
- Cable routing by cable clips
- 50 kg load, max.
- Solvent-free, impact- and scratch-resistant powder coating in black
- Optionally: Cisco Room-Kit Adapter WebEx Board 55 | Item no.: 2901 (Page 20 | 21)

Item no.: 5863

WH Cisco WebEx Board 70"

- Wall mounting system
- Display specific for collaboration room system Cisco WebEx Board 70"
- Hole pattern display specific optimised
- Dimensions (without Cisco WebEx Board):  
H 948 x W 1600 x D 75 mm
- Cable routing by cable clips
- 85 kg load, max.
- Solvent-free, impact- and scratch-resistant powder coating in black
- Optionally: Cisco Room-Kit Adapter WebEx Board 70 | Item no.: 2902 (Page 20 | 21)

Item no.: 5836

WH Cisco WebEx Board Pro 75"

- Wall mounting system
- Display specific for collaboration room system Cisco WebEx Board Pro 75"
- Hole pattern display specific optimised
- Dimensions (without Cisco WebEx Board):  
H 750 x W 1650 x D 89 mm
- Cable routing by cable clips
- 85 kg load, max.
- Solvent-free, impact- and scratch-resistant powder coating in black

Item no.: 5837

WH Cisco WebEx Board 85"

- Wall mounting system
- Display specific for collaboration room system Cisco WebEx Board 85"
- Hole pattern display specific optimised
- Dimensions (without Cisco WebEx Board):  
H 1059 x W 1950 x D 75 mm
- Cable routing by cable clips
- 110 kg load, max.
- Solvent-free, impact- and scratch-resistant powder coating in black
- Optionally: Cisco Room-Kit Adapter WebEx Board 85 | Item no.: 2903 (Page 20 | 21)

Item no.: 5838





ST Cisco WebEx Board 55" | Board Pro 55"

- Freestanding stand system
- Display specific for collaboration room systems Cisco WebEx Board 55" and Cisco WebEx Board Pro 55"
- Hole pattern display specific optimised
- Dimensions (without Cisco WebEx Board): H 1950 x W 1250 x D 1007 mm
- Cable routing by cable clips
- Adjustable feet for precise alignment
- 50 kg load, max.
- Solvent-free, impact- and scratch-resistant powder coating in black
- Optionally: Cisco Room-Kit Adapter WebEx Board 55 | Item no.: 2901 (Page 20 | 21)

Item no.: 5839

ST Cisco WebEx Board 70"

- Freestanding stand system
- Display specific for collaboration room system Cisco WebEx Board 70"
- Hole pattern display specific optimised
- Dimensions (without Cisco WebEx Board): H 1950 x W 1600 x D 1007 mm
- Cable routing by cable clips
- Adjustable feet for precise alignment
- 85 kg load, max.
- Solvent-free, impact- and scratch-resistant powder coating in black
- Optionally: Cisco Room-Kit Adapter WebEx Board 70 | Item no.: 2902 (Page 20 | 21)

Item no.: 5840

ST Cisco WebEx Board Pro 75"

- Freestanding stand system
- Display specific for collaboration room system Cisco WebEx Board Pro 75"
- Hole pattern display specific optimised
- Dimensions (without Cisco WebEx Board): H 1950 x W 1650 x D 1007 mm
- Cable routing by cable clips
- Adjustable feet for precise alignment
- 85 kg load, max.
- Solvent-free, impact- and scratch-resistant powder coating in black

Item no.: 5841

ST Cisco WebEx Board 85"

- Freestanding stand system
- Display specific for collaboration room system Cisco WebEx Board 85"
- Hole pattern display specific optimised
- Dimensions (without Cisco WebEx Board): H 1915 x W 1950 x D 1000 mm
- Cable routing by cable clips
- Adjustable feet for precise alignment
- 110 kg load, max.
- Solvent-free, impact- and scratch-resistant powder coating in black
- Optionally: Cisco Room-Kit Adapter WebEx Board 85 | Item no.: 2903 (Page 20 | 21)

Item no.: 5842





**STM Cisco WebEx Board 55" | Board Pro 55"**

- Mobile stand system
- Display specific for collaboration room systems Cisco WebEx Board 55" and Cisco WebEx Board Pro 55"
- Hole pattern display specific optimised
- Dimensions (without Cisco WebEx Board): H 2005 x W 1250 x D 1007 mm
- Cable routing by cable clips
- Castors with locking brake
- 50 kg load, max.
- Solvent-free, impact- and scratch-resistant powder coating in black
- Optionally: Cisco Room-Kit Adapter WebEx Board 55 | Item no.: 2901 (Page 20 | 21)

**Item no.: 5843**

**STM Cisco WebEx Board 70"**

- Mobile stand system
- Display specific for collaboration room system Cisco WebEx Board 70"
- Hole pattern display specific optimised
- Dimensions (without Cisco WebEx Board): H 2005 x W 1600 x D 1007 mm
- Cable routing by cable clips
- Castors with locking brake
- 85 kg load, max.
- Solvent-free, impact- and scratch-resistant powder coating in black
- Optionally: Cisco Room-Kit Adapter WebEx Board 70 | Item no.: 2902 (Page 20 | 21)

**Item no.: 5844**

**STM Cisco WebEx Board Pro 75"**

- Mobile stand system
- Display specific for collaboration room system Cisco WebEx Board Pro 75"
- Hole pattern display specific optimised
- Dimensions (without Cisco WebEx Board):: H 2005 x W 1650 x D 1007 mm
- Cable routing by cable clips
- Castors with locking brake
- 85 kg load, max.
- Solvent-free, impact- and scratch-resistant powder coating in black

**Item no.: 5845**

**STM Cisco WebEx Board 85"**

- Mobile stand system
- Display specific for collaboration room system Cisco WebEx Board 85"
- Hole pattern display specific optimised
- Dimensions (without Cisco WebEx Board):: H 1970 x W 1950 x D 1000 mm
- Cable routing by cable clips
- Castors with locking brake
- 110 kg load, max.
- Solvent-free, impact- and scratch-resistant powder coating in black
- Optionally: Cisco Room-Kit Adapter WebEx Board 85 | Item no.: 2903 (Page 20 | 21)

**Item no.: 5846**





**STBW Cisco WebEx Board 55" | Board Pro 55"**

- System for floor-wall mounting
- Display specific for collaboration room systems Cisco WebEx Board 55" and Cisco WebEx Board Pro 55"
- Hole pattern display specific optimised
- Dimensions (without Cisco WebEx Board): H 2120 x W 1250 mm
- Cable routing by cable clips
- Wall distance variable - 40 mm range
- 50 kg load, max.
- Solvent-free, impact- and scratch-resistant powder coating in black
- Optionally: Cisco Room-Kit Adapter WebEx Board 55 | Item no.: 2901 (Page 20 | 21)

**Item no.: 5847**

**STBW Cisco WebEx Board 70"**

- System for floor-wall mounting
- Display specific for collaboration room system Cisco WebEx Board 70"
- Hole pattern display specific optimised
- Dimensions (without Cisco WebEx Board):: H 2120 x W 1600 mm
- Cable routing by cable clips
- Wall distance variable - 40 mm range
- 85 kg load, max.
- Solvent-free, impact- and scratch-resistant powder coating in black
- Optionally: Cisco Room-Kit Adapter WebEx Board 70 | Item no.: 2902 (Page 20 | 21)

**Item no.: 5848**

**STBW Cisco WebEx Board Pro 75"**

- System for floor-wall mounting
- Display specific for collaboration room system Cisco WebEx Board Pro 75"
- Hole pattern display specific optimised
- Dimensions (without Cisco WebEx Board):: H 2120 x W 1650 mm
- Cable routing by cable clips
- Wall distance variable - 40 mm range
- 85 kg load, max.
- Solvent-free, impact- and scratch-resistant powder coating in black

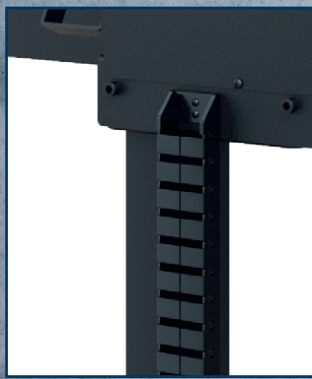
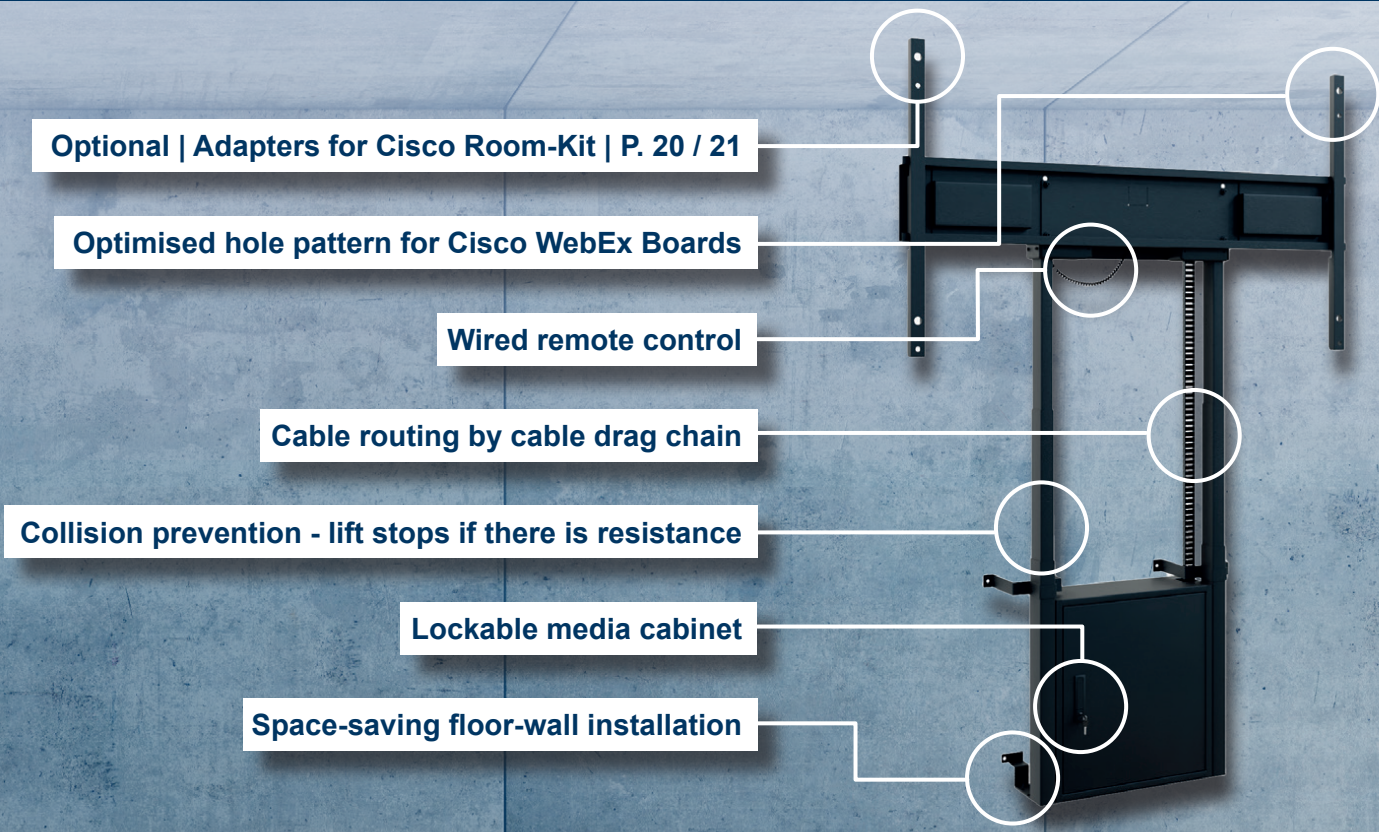
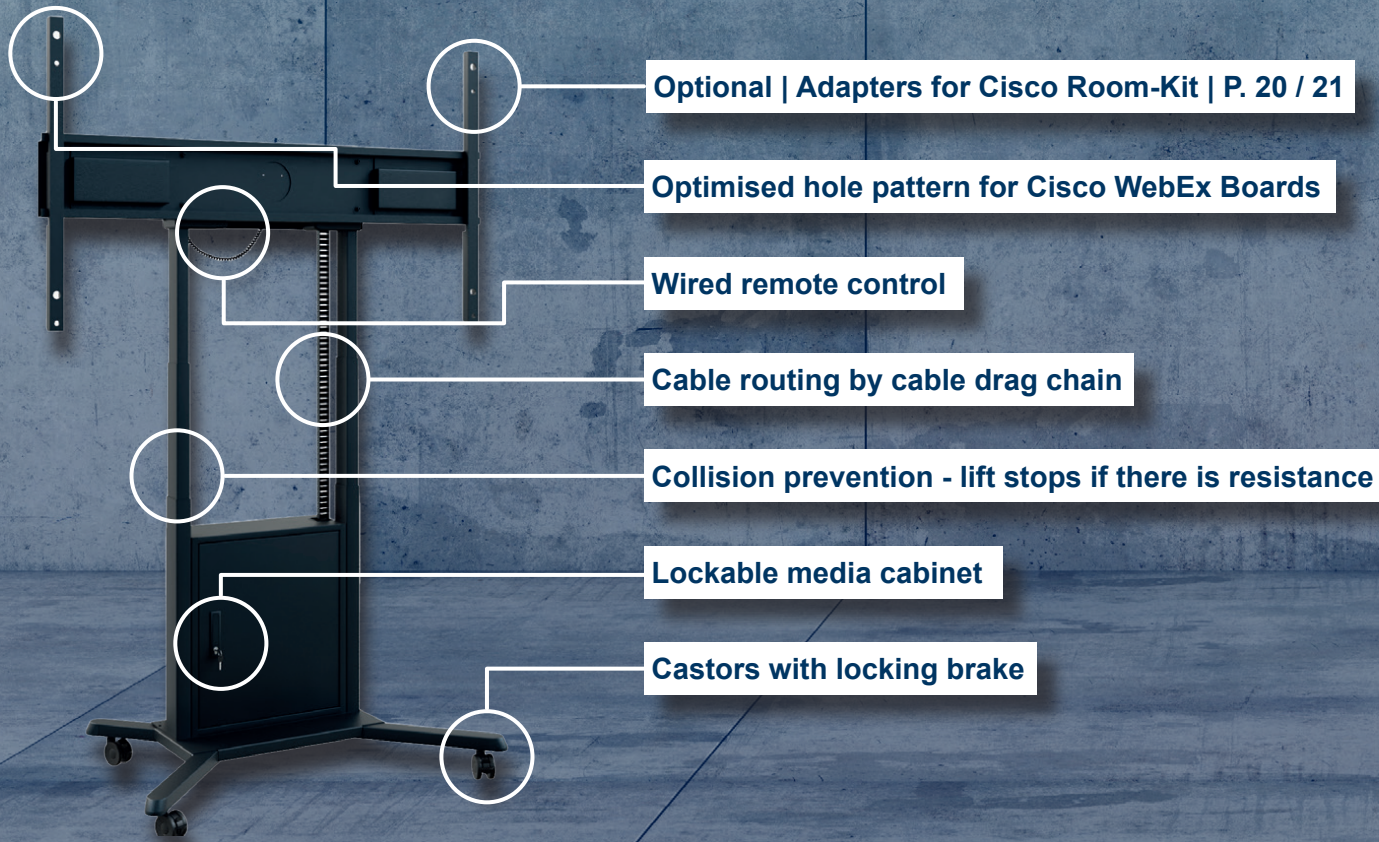
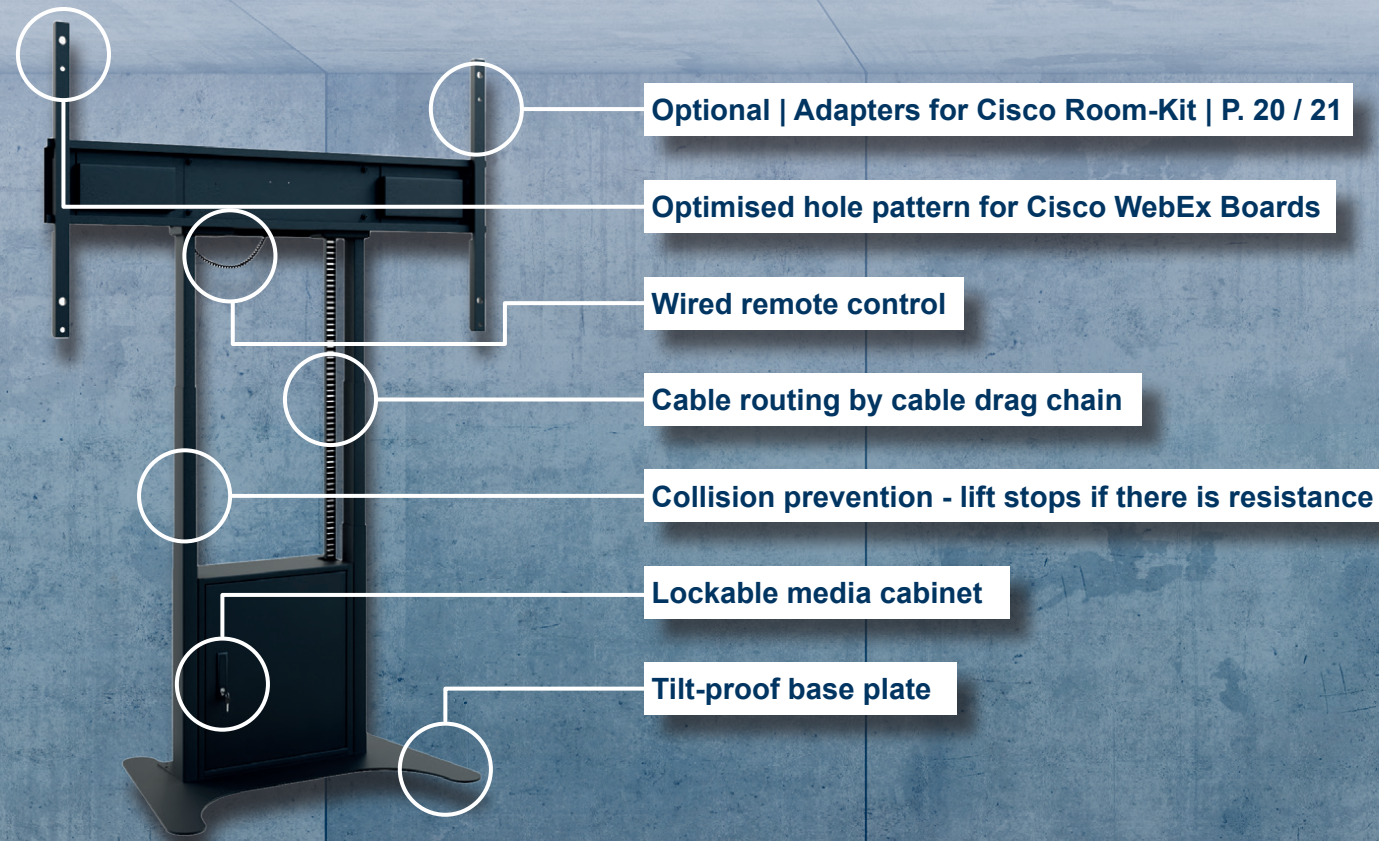
**Item no.: 5849**

**STBW Cisco WebEx Board 85"**

- System for floor-wall mounting
- Display specific for collaboration room system Cisco WebEx Board 85"
- Hole pattern display specific optimised
- Dimensions (without Cisco WebEx Board):: H 2120 x W 1950 mm
- Cable routing by cable clips
- Wall distance variable - 40 mm range
- 110 kg load, max.
- Solvent-free, impact- and scratch-resistant powder coating in black
- Optionally: Cisco Room-Kit Adapter WebEx Board 85 | Item no.: 2903 (Page 20 | 21)

**Item no.: 5850**









**ST Motorized Cisco WebEx Board 55" | Board Pro 55"**

- Freestanding lift system
- Display specific for collaboration room systems Cisco WebEx Board 55" and Cisco WebEx Board Pro 55"
- Hole pattern display specific optimised
- Electro-motorically height adjustment with wired remote control
- Collision prevention - lift stops if there is resistance
- Cable routing by cable drag chain
- 980 mm stroke
- 50 kg load, max.
- Solvent-free, impact- and scratch-resistant powder coating in black

**Item no.: 5851**



**ST Motorized Cisco WebEx Board 70" | Board Pro 75"**

- Freestanding lift system
- Display specific for collaboration room systems Cisco WebEx Board 70" and Cisco WebEx Board Pro 75"
- Hole pattern display specific optimised
- Electro-motorically height adjustment with wired remote control
- Collision prevention - lift stops if there is resistance
- Cable routing by cable drag chain
- 980 mm stroke
- 85 kg load, max.
- Solvent-free, impact- and scratch-resistant powder coating in black

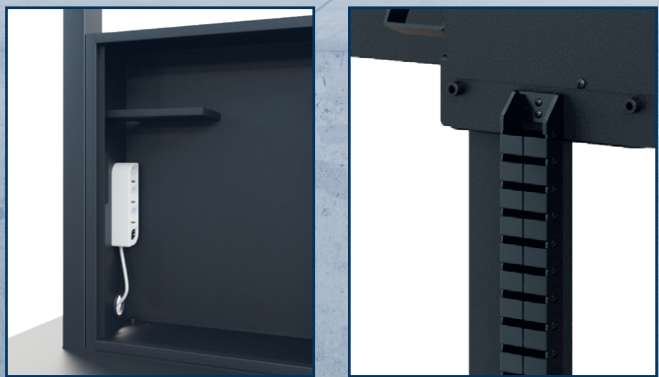
**Item no.: 5852**



**ST Motorized Cisco WebEx Board 85"**

- Freestanding lift system
- Display specific for collaboration room system Cisco WebEx Board 85"
- Hole pattern display specific optimised
- Electro-motorically height adjustment with wired remote control
- Collision prevention - lift stops if there is resistance
- Cable routing by cable drag chain
- 980 mm stroke
- 110 kg load, max.
- Solvent-free, impact- and scratch-resistant powder coating in black

**Item no.: 5854**







**STM Motorized Cisco WebEx Board 55" | Board Pro 55"**

- Mobile lift system
- Display specific for collaboration room systems Cisco WebEx Board 55" and Cisco WebEx Board Pro 55"
- Hole pattern display specific optimised
- Electro-motorically height adjustment with wired remote control
- Collision prevention - lift stops if there is resistance
- Cable routing by cable drag chain
- 980 mm stroke
- 50 kg load, max.
- Solvent-free, impact- and scratch-resistant powder coating in black

Item no.: 5855



**STM Motorized Cisco WebEx Board 70" | Board Pro 75"**

- Mobile lift system
- Display specific for collaboration room systems Cisco WebEx Board 70" and Cisco WebEx Board Pro 75"
- Hole pattern display specific optimised
- Electro-motorically height adjustment with wired remote control
- Collision prevention - lift stops if there is resistance
- Cable routing by cable drag chain
- 980 mm stroke
- 85 kg load, max.
- Solvent-free, impact- and scratch-resistant powder coating in black

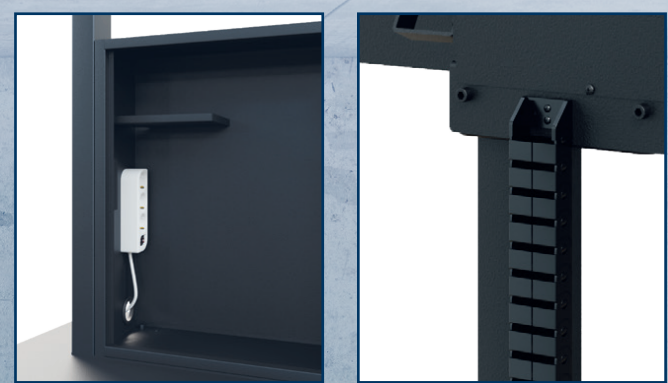
Item no.: 5856



**STM Motorized Cisco WebEx Board 85"**

- Mobile lift system
- Display specific for collaboration room system Cisco WebEx Board 85"
- Hole pattern display specific optimised
- Electro-motorically height adjustment with wired remote control
- Collision prevention - lift stops if there is resistance
- Cable routing by cable drag chain
- 980 mm stroke
- 110 kg load, max.
- Solvent-free, impact- and scratch-resistant powder coating in black

Item no.: 5858







**STBW Motorized Cisco WebEx Board 55" | Board Pro 55"**

- Lift system for floor-to-wall installation
- Display specific for collaboration room systems Cisco WebEx Board 55" and Cisco WebEx Board Pro 55"
- Hole pattern display specific optimised
- Electro-motorically height adjustment with wired remote control
- Collision prevention - lift stops if there is resistance
- Cable routing by cable drag chain
- 980 mm stroke
- 50 kg load, max.
- Solvent-free, impact- and scratch-resistant powder coating in black

Item no.: 5859



**STBW Motorized Cisco WebEx Board 70" | Board Pro 75"**

- Lift system for floor-to-wall installation
- Display specific for collaboration room systems Cisco WebEx Board 70" and Cisco WebEx Board Pro 75"
- Hole pattern display specific optimised
- Electro-motorically height adjustment with wired remote control
- Collision prevention - lift stops if there is resistance
- Cable routing by cable drag chain
- 980 mm stroke
- 85 kg load, max.
- Solvent-free, impact- and scratch-resistant powder coating in black

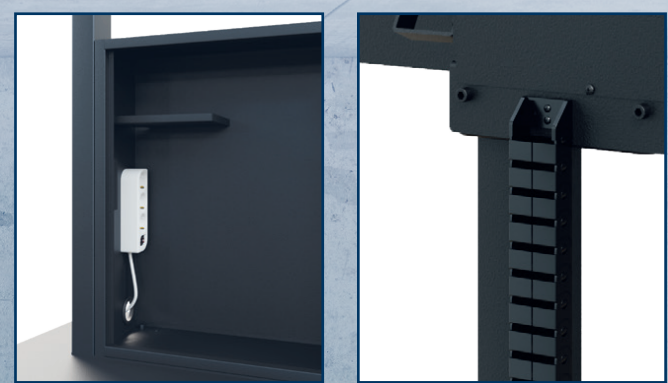
Item no.: 5860



**STBW Motorized Cisco WebEx Board 85"**

- Lift system for floor-to-wall installation
- Display specific for collaboration room system Cisco WebEx Board 85"
- Hole pattern display specific optimised
- Electro-motorically height adjustment with wired remote control
- Collision prevention - lift stops if there is resistance
- Cable routing by cable drag chain
- 980 mm stroke
- 110 kg load, max.
- Solvent-free, impact- and scratch-resistant powder coating in black

Item no.: 5862







Cisco Room-Kit Adapter WebEx Board 55"

- Hole pattern Display specific optimised for Cisco WebEx Board 55"
- Suitable for mounting on  
Item no.: 5863, 5839, 5843, 5847, 5851, 5855, 5859
- Suitable for:  
Cisco WebEx Room-Kit  
Cisco WebEx Room-Kit Mini  
Cisco WebEx Room-Kit Plus\*
- Installation between the screen and the screen mount
- Installation electively possible above or beneath the screen
- Continuously height adjustable
- Solvent-free, impact- and scratch-resistant powder coating
- Colour: black

\* The codec of the Cisco Room-Kit Plus can also be mounted on the back of the adapter

Item no.: 2901

Cisco Room-Kit Adapter WebEx Board 70"

- Hole pattern Display specific optimised for Cisco WebEx Board 70"
- Suitable for mounting on  
Item no.: 5836, 5840, 5844, 5848, 5852, 5856, 5860
- Suitable for:  
Cisco WebEx Room-Kit  
Cisco WebEx Room-Kit Mini  
Cisco WebEx Room-Kit Plus\*
- Installation between the screen and the screen mount
- Installation electively possible above or beneath the screen
- Continuously height adjustable
- Solvent-free, impact- and scratch-resistant powder coating
- Colour: black

\* The codec of the Cisco Room-Kit Plus can also be mounted on the back of the adapter

Item no.: 2902

Cisco Room-Kit Adapter WebEx Board 85S"

- Hole pattern Display specific optimised for Cisco WebEx Board 85"
- Suitable for mounting on  
Item no.: 5838, 5842, 5846, 5850, 5854, 5858, 5862
- Suitable for:  
Cisco WebEx Room-Kit  
Cisco WebEx Room-Kit Mini  
Cisco WebEx Room-Kit Plus\*
- Installation between the screen and the screen mount
- Installation electively possible above or beneath the screen
- Continuously height adjustable
- Solvent-free, impact- and scratch-resistant powder coating
- Colour: black

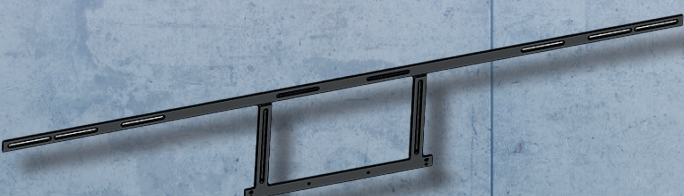
\* The codec of the Cisco Room-Kit Plus can also be mounted on the back of the adapter

Item no.: 2903

Please note! The Cisco Room-Kit adapters are NOT suitable for mounting on Cisco WebEx Board Pro 55" and Cisco WebEx Board Pro 75".

Please note! To use the Cisco WebEx Room-Kit Plus (with codec), the wall distance must be at least 60 mm.





Cisco Room-Kit Adapter 55 – 75“

- Universal adapters for Cisco Room-Kit
- Suitable for sceens with 55 - 75" | 140 - 191 cm
- Suitable for:  
Cisco WebEx Room-Kit  
Cisco WebEx Room-Kit Mini  
Cisco WebEx Room-Kit Plus\*
- Mounting between the screen and any suitable universal mount up to VESA 800
- Installation electively possible above or beneath the screen
- Continuously height adjustable
- Solvent-free, impact- and scratch-resistant powder coating
- Colour: black

\* The codec of the Cisco Room-Kit Plus can also be mounted on the back of the adapter

Item no.: 1925

Cisco Room-Kit Adapter 75 - 86“

- Universal adapters for Cisco Room-Kit
- Suitable for sceens with 75 - 86" | 191 - 218 cm
- Suitable for:  
Cisco WebEx Room-Kit  
Cisco WebEx Room-Kit Mini  
Cisco WebEx Room-Kit Plus\*
- Mounting between the screen and any suitable universal mount up to VESA 800
- Installation electively possible above or beneath the screen
- Continuously height adjustable
- Solvent-free, impact- and scratch-resistant powder coating
- Colour: black

\* The codec of the Cisco Room-Kit Plus can also be mounted on the back of the adapter

Item no.: 2900

Cisco Room-Kit Adapter Dual

- Universal adapters for Cisco Room-Kit
- For central placement between 2 screens 55", 140 cm | 65", 165 cm | 75", 191 cm
- Suitable for:  
Cisco WebEx Room-Kit  
Cisco WebEx Room-Kit Mini  
Cisco WebEx Room-Kit Plus\*
- Mounting between the screen and any suitable universal mount up to VESA 800
- Installation electively possible above or beneath the screen
- Continuously height adjustable
- Solvent-free, impact- and scratch-resistant powder coating
- Colour: black

\* The codec of the Cisco Room-Kit Plus can also be mounted on the back of the adapter

Item no.: 2282

Please note! To use the Cisco WebEx Room-Kit Plus (with codec), the wall distance must be at least 60 mm.

Please note! To use the Cisco WebEx Room-Kit Plus (with codec), the wall distance must be at least 60 mm.





The screens shown are for illustrative purposes and are NOT included in the scope of delivery. This document is the property of HAGOR Products GmbH. Passing on and reproduction of this document, exploitation and communication of its contents are prohibited unless expressly permitted. Infringement will lead to compensation for damages. All rights reserved in the event of patent, utility model or design registration.