

ScreenOut[®] Pro Back-to-Back

Item no.: 1743

Outdoor totem for two screens with heating and ventilation

The ScreenOut[®] Pro back-to-back is an outdoor totem, which is suitable for 2 screens with a screen size of 55" | 140 cm. The screens are mounted „back-to-back“. The VESA mount meets the VESA standard and is adapted to the respective hole pattern on the screen.

The totem is made from a high-quality steel construction, is lockable and supplied with 6.4 mm thick, anti-reflective laminated safety glass (VSG). The base offers space for concealed floor wiring and is accessible via a service flap. The installed components are always protected against unauthorized access and vandalism.

The ScreenOut[®] Eco Kiosk series includes active ventilation by high-quality industrial fans and a filter bank as standard to ensure perfect air circulation (air curtain) or filtering.

The front of the outdoor totem is manufactured according to protection standard IP65 / NEMA 4, the back according to IP54 standard. The cabling and protection is carried out professionally according to VDE specifications (e-check).

The outdoor totem is also tested according to EMC requirements and has the DGUV V3 seal of approval.

The interior dimensions offer enough space e. G. for a mini PC, Set Top Box or plug-bar.

Thanks to industrial fans, industrial heating and double sensor-based temperature control the outdoor totem is suitable in an ambient temperature range from -25 up to +40° C.

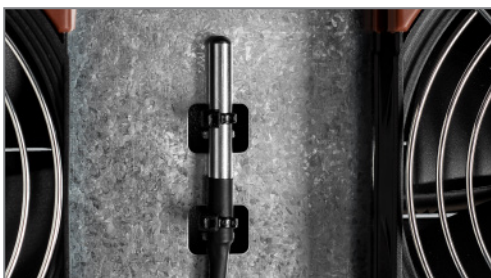
The standard version is intended for permanent installation using a foundation*.

Optionally, the totem can be customized in special RAL colours or with a logo.

Optionally available with VA protection bumpers or base plate on request.



Cabling according to VDE guidelines



Temperature sensors



optional: VA protection bumpers



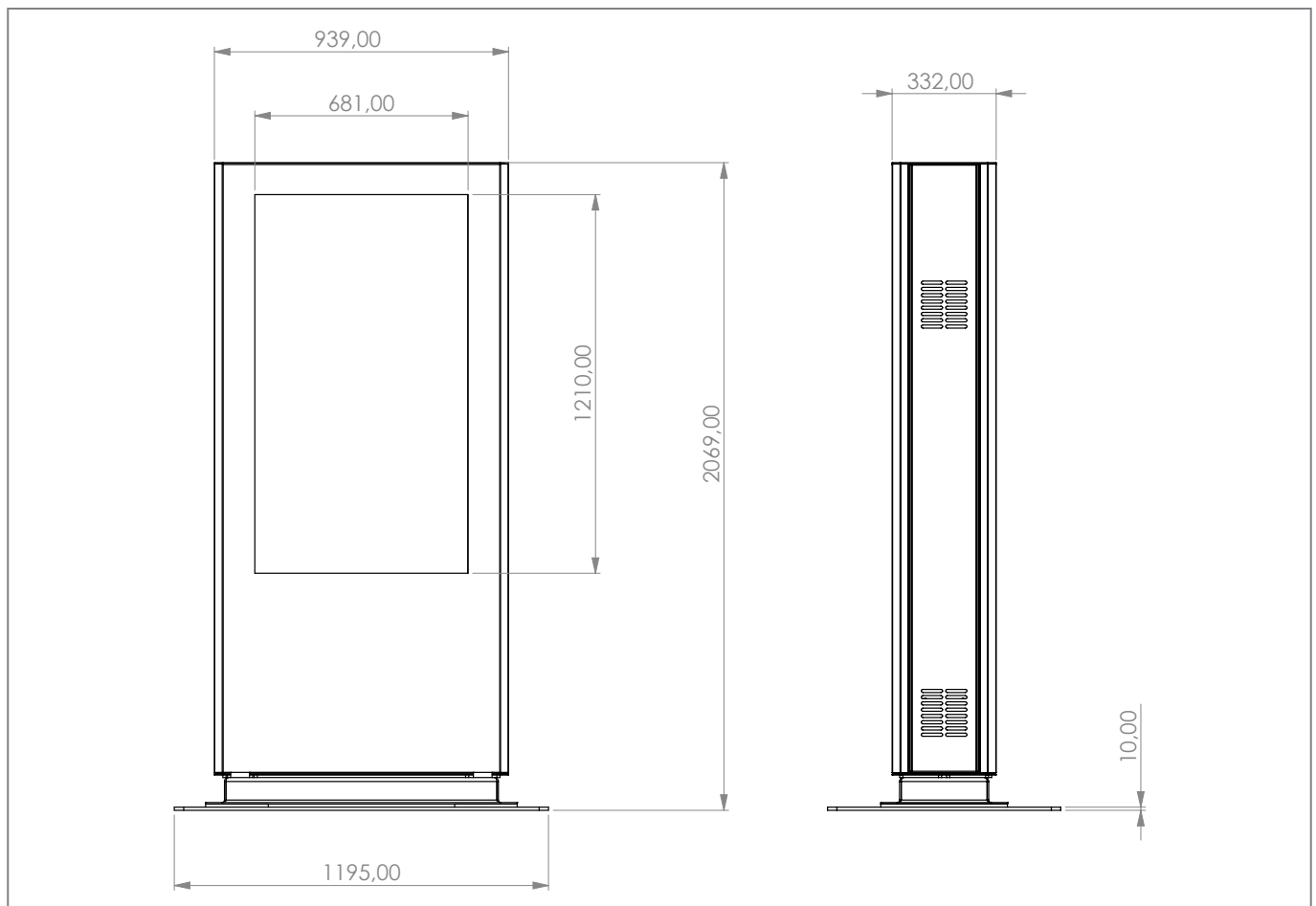
*Please note! The supernatant of the threaded rods in the existing foundation must be at least 14 cm.
Technical changes reserved | ScreenOut[®] is a registered trademark of HAGOR Products GmbH

ScreenOut[®] Pro Back-to-Back

Item no.: 1743

Outdoor totem for two screens with heating and ventilation

- for 2 screens with a size of 55" | 140 cm
- VESA mount, adapted to the hole pattern of the screen
- 6.4 mm thick, antireflective laminated safety glass (LSG)
- manufactured according to:
IP 65 / NEMA 4 and IP 54
- totem is lockable, protection from unauthorized access and vandalism
- enough space for mini PC or Set Top Box
- impact and scratch resistant powder-coating
- standard: anthracite grey (RAL 7016),
more RAL colours on request
- Dimensions: W 939 x H 2069 x D 332 mm
- double sensor-based temperature control
- thanks to high-quality heating and ventilation
suitable for an ambient temperature range
between -25° C and +40° C
- order-related production
- optional:
 - desired colour according to RAL (Item no.: 1664)
 - WLAN antenna (Item no.: 2515)
 - logo as film plot
 - base plate
 - VA protection bumpers

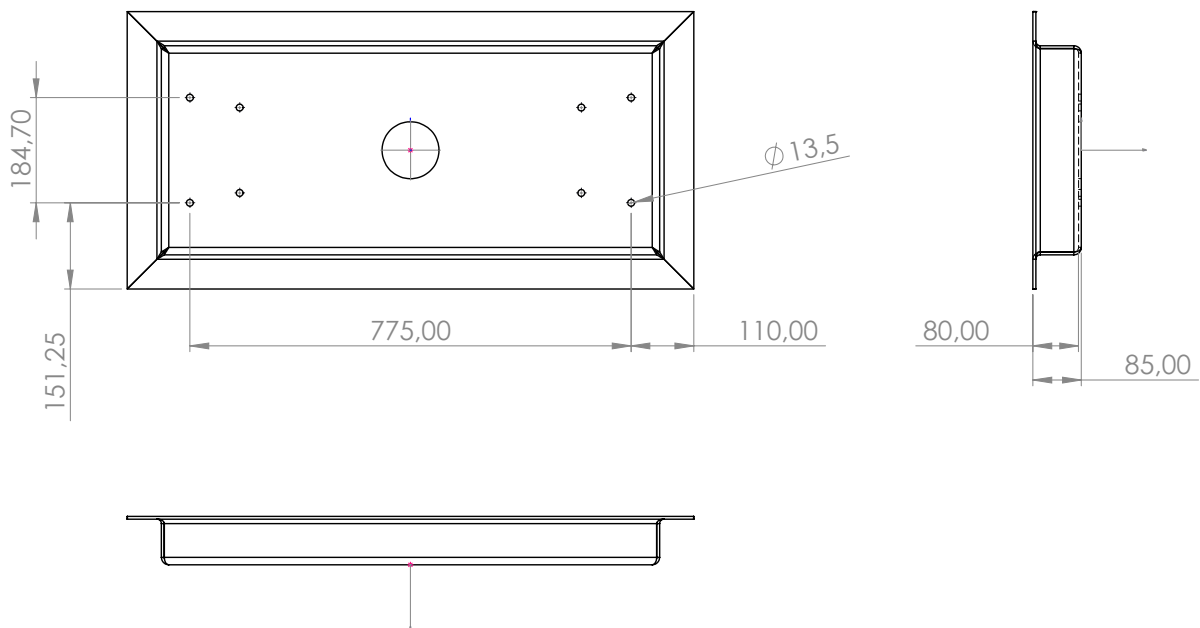


*Please note! The supernatant of the threaded rods in the existing foundation must be at least 14 cm.
Technical changes reserved | ScreenOut[®] is a registered trademark of HAGOR Products GmbH

ScreenOut[®] Pro Back-to-Back

Outdoor totem for two screens with heating and ventilation

Item no.: 1743



*Please note! The supernatant of the threaded rods in the existing foundation must be at least 14 cm.
Technical changes reserved | ScreenOut[®] is a registered trademark of HAGOR Products GmbH