

CON-Line[®] W 75 - 86“

Media column, floor-wall mounting

Item no.: 2809

The CON-Line W 75 - 86“ is a media column for floor-wall mounting. Due to its compact design, it can be placed almost anywhere.

It is suitable for screens with a size from 75 to 86“ | 191 - 218 cm. The included VESA mount can be fitted with VESA 900 x 800 mm max.. The screen is mounted in landscape orientation.

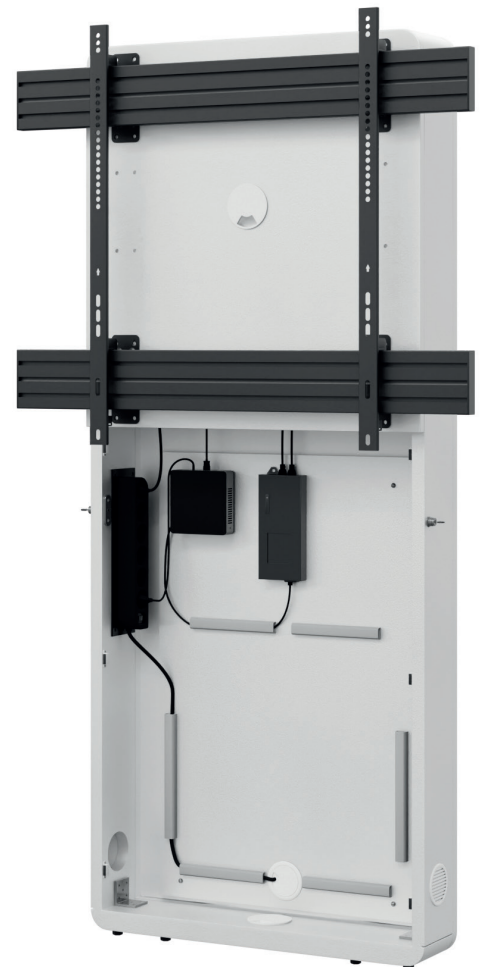
The removable AV mounting plate makes the installation quick and easy. Ventilation grilles in the corpus provide sufficient ventilation. AV accessories

are protected behind the front panel with magnet lock. Retractable security locks on both sides of the corpus provide additional security.

Due to the space saving floor-wall mounting not much space is required. Levelling feet mounted underneath the corpus provide levelling if required.

The maximum load is 75 kg.

Other colour or decor variants (corpus) are available on request - also as unique piece.



CON-Line[®] W 75 - 86“

Media column, floor-wall mounting

Item no.: 2809

- Media column for floor-wall mounting
- Suitable for screens from 75 - 86" | 191 - 218 cm
- Screen mounting in landscape orientation
- VESA standard up to max. 900 x 800 mm
- Front panel with magnetic lock
- Space saving floor-wall mounting
- Levelling feet for level compensation
- Ventilation grilles in the corpus
- AV accessories are protected from unauthorised access inside the furniture corpus
- Easy assembly thanks to removable AV mounting plate
- Retractable security locks on both sides of the corpus
- 75 kg load, max.
- Colour: white



Levelling feet under the corpus provide level compensation



Accessories are protected inside the corpus



Easy assembly thanks to removable AV mounting plate

