

## CON-Line<sup>®</sup> Big W Lift Dual 65 - 75"

Item no.: 2775

Media column, dual, floor-wall mounting, electrically height adjustable

The CON-Line Big W Lift Dual 65 - 75" is a media column for floor-wall mounting with an integrated lift. Due to its compact design, it can be placed almost anywhere.

The electro-motorised height adjustment is controlled via a push button control. It has four memory slots to save individual presets. The lift has a stroke of 500 mm and is equipped with collision protection, which means that the lift stops as soon as resistance is encountered.

It is suitable for two screens side-by-side with a size from 65" up to 75" | 165 - 191 cm. The fine adjustable VESA mounts can be fitted from VESA 200 x 200 mm min. up to VESA 800 x 600 mm max.. The screen is mounted in landscape format.

Ventilation grilles in the corpus provide sufficient ventilation.

AV accessories are protected behind the front panel with sliding door incl. soft close. The removable AV mounting panel (2 pcs) makes the installation quick and easy.

A retractable security lock on the side of the corpus provide additional security.

Due to the space saving floor-wall mounting not much space is required. Levelling feet mounted underneath the corpus provide levelling if required.

The maximum load is 2x 50 kg.

Other colour or decor variants (corpus) are available on request - also as unique piece.



Easy assembly thanks to AV mounting panel (2 pcs)



Accessories are protected inside the corpus



Retractable security lock



Push button control with 4 memory slots for individual presets

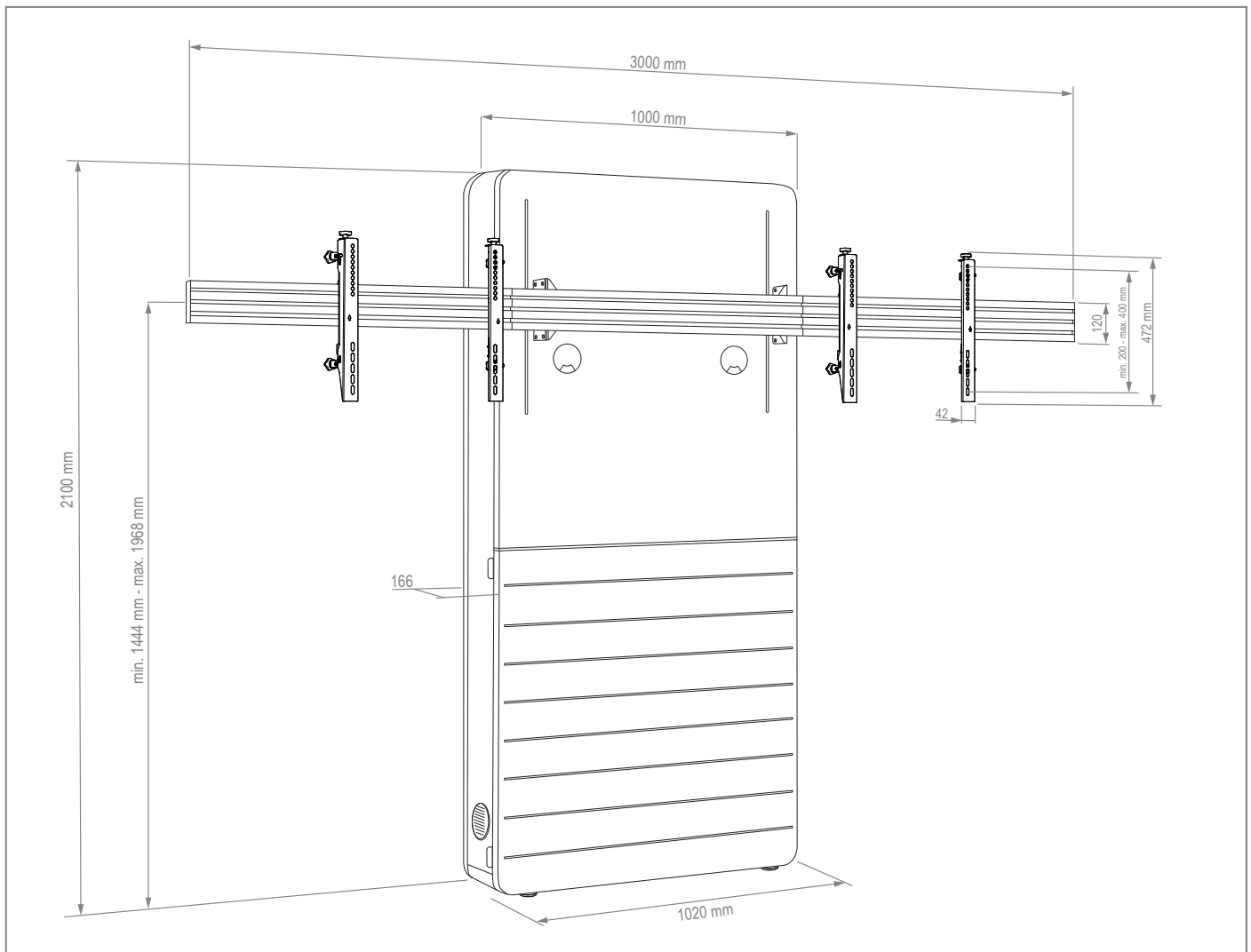
## CON-Line<sup>®</sup> Big W Lift Dual 65 - 75"

Item no.: 2775

Media column, dual, floor-wall mounting, electrically height adjustable

- Media column for floor-wall-mounting with an integrated lift
- 2x 65 - 75" | 165 - 191 cm, side-by-side
- Screen mounting in landscape orientation
- VESA, min. 200 x 200 mm - max. 800 x 400 mm (max. 800 x 600 mm with incl. adapter stripes)
- Electro-motorised height adjustment with 500 mm stroke
- Collision protection - lift stops if there is resistance
- Push button control with 4 memory slots for individual presets

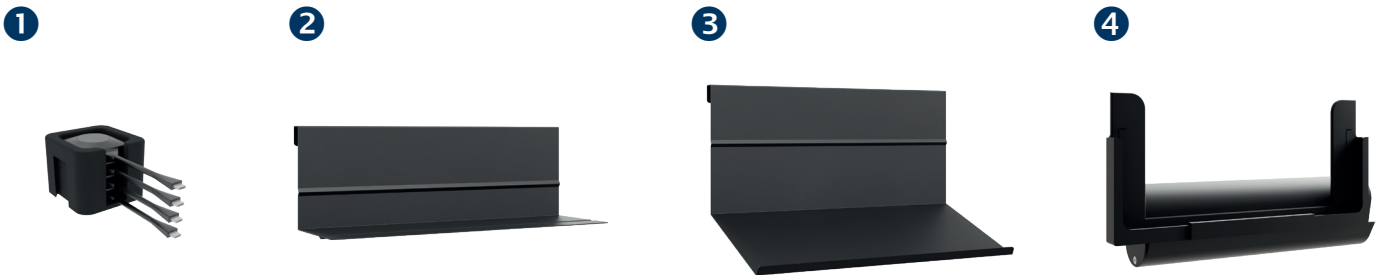
- Ventilation grilles in the corpus
- Easy assembly thanks to removable AV mounting panel (2 pcs)
- Frontcover with sliding door incl. soft-close
- AV accessories are protected from unauthorised access inside the furniture corpus
- Retractable security lock on the side of the corpus
- Space saving floor-wall mounting
- Levelling feet for level compensation
- 2x 50 kg load, max.
- Colour: white



Technical changes reserved | This document is the property of HAGOR Products GmbH. Forwarding and duplication of this document, utilization and communication of its contents are not permitted unless expressly permitted. A violation obliges you to pay compensation. All rights reserved in the event of a patent, utility model or design registration.

# Accessories CON-Line®

## Optional accessories for CON-Line and CON-Line Big



Item no.:	Item name	Function & suitability	Illustration	Colour
2935	CON-Line® Dongle Tray	Dongle tray, suitable for all versions of the CON-Line® and CON-Line® Big media columns	1	schwarz
2932	CON-Line® AV Shelf	AV Shelf, suitable for all versions of the CON-Line® and CON-Line® Big media columns	2	
2933	CON-Line® Laptopholder	Laptopholder, suitable for all versions of the CON-Line® and CON-Line® Big media columns	3	
2882	CON-Line® Tabletholder	Tabletholder, universal, suitable for all versions of the CON-Line® and CON-Line® Big media columns	4	

# Accessories CON-Line®

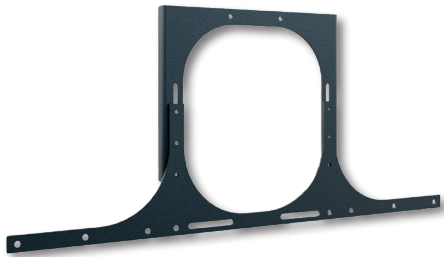
## Optional accessories for CON-Line and CON-Line Big



Item no.: 2286



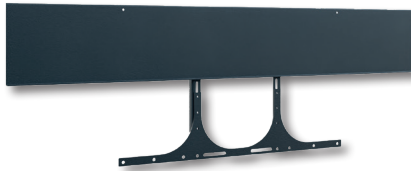
Item no.: 2918



Item no.: 2931



Item no.: 2278



Item no.: 2919



Item no.: 2282

Item no.:	Item name	Recommended screen size	VESA	Function & suitability	Illustration	Colour
2286	Poly Display Adapter 55 - 75"	55 - 75"   140 - 191 cm	max. 800 mm	Adapter for Poly Studio, Poly Studio X50 and Poly Studio X70	①	schwarz
2287	Poly Display Adapter 75 - 86"	75 - 86"   191 - 218 cm		-		
2918	Poly P15, E70, X30 Display Adapter 55 - 75"	55 - 75"   140 - 191 cm		Adapter for Poly Studio P15, Poly Studio E70 and Poly Studio X30	②	
2931	Logitech Rally Bar & Rally Bar Mini Adapter 55 - 86"	55 - 86"   140 - 218 cm		Adapter for Logitech Rally Bar and Logitech Rally Bar Mini	③	
2937	Logitech Rally Bar Huddle Adapter 55 - 75"	55 - 75"   140 - 191 cm		Adapter for Logitech Rally Bar Huddle	-	
2278	Meetup Display Adapter 55 - 75"	55 - 75"   140 - 191 cm		Adapter for Logitech Meetup	④	
2279	Meetup Display Adapter 75 - 86"	75 - 86"   191 - 218 cm		-		
2919	Nureva HDL 300 Adapter 55 - 75"	55 - 75"   140 - 191 cm		Adapter for Nureva HDL 300	⑤	
2920	Nureva HDL 300 Adapter 75 - 86"	75 - 86"   191 - 218 cm		-		
1925	Cisco Room-Kit Adapter 55 - 75"	55 - 75"   140 - 191 cm		-		
2900	Cisco Room-Kit Adapter 75 - 86"	75 - 86"   191 - 218 cm		Adapter for Cisco Webex Room Kit Mini, Cisco Webex Room Kit, Cisco Webex Room Kit Plus and Cisco Room Kit EQ	-	
2282	Cisco Room-Kit Adapter Dual	55", 65", 75"   140 cm, 165 cm, 191 cm		⑥		